

PHB Antibody
Purified Mouse Monoclonal Antibody (Mab)
Catalog # AW5065

Specification

PHB Antibody - Product Information

| | |
|-------------------|------------------------|
| Application | IHC-P, WB,E |
| Primary Accession | P35232 |
| Reactivity | Human, Mouse, Rat |
| Host | Mouse |
| Clonality | Monoclonal |
| Calculated MW | H=30;M=30;Rat=30 KDa |
| Isotype | IgG2b,k |
| Antigen Source | HUMAN |

PHB Antibody - Additional Information

Gene ID 5245

Antigen Region
1-205

Other Names
Prohibitin, PHB

Dilution
IHC-P~~1:25
WB~~1:1000

Target/Specificity
This antibody is generated from a mice immunized with a recombinant protein between 1-205 amino acids from human.

Format
Purified monoclonal antibody supplied in PBS with 0.09% (W/V) sodium azide. This antibody is purified through a protein G column, followed by dialysis against PBS.

Storage
Maintain refrigerated at 2-8°C for up to 2 weeks. For long term storage store at -20°C in small aliquots to prevent freeze-thaw cycles.

Precautions
PHB Antibody is for research use only and not for use in diagnostic or therapeutic procedures.

PHB Antibody - Protein Information

Name PHB1 {ECO:0000303|PubMed:28017329, ECO:0000312|HGNC:HGNC:8912}

Function

Protein with pleiotropic attributes mediated in a cell- compartment- and tissue-specific manner, which include the plasma membrane-associated cell signaling functions, mitochondrial chaperone, and transcriptional co-regulator of transcription factors in the nucleus (PubMed:11302691, PubMed:20959514, PubMed:28017329, PubMed:31522117). Plays a role in adipose tissue and glucose homeostasis in a sex-specific manner (By similarity). Contributes to pulmonary vascular remodeling by accelerating proliferation of pulmonary arterial smooth muscle cells (By similarity).

Cellular Location

Mitochondrion inner membrane. Nucleus. Cytoplasm. Cell membrane

Tissue Location

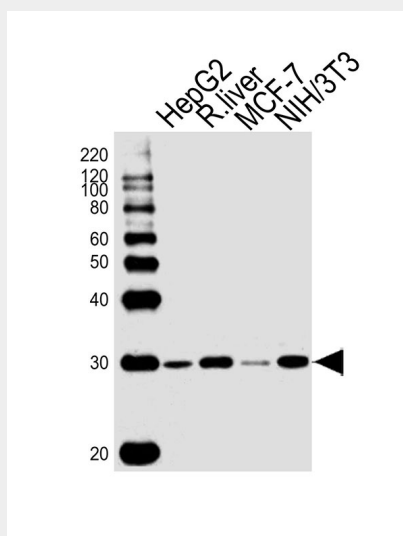
Widely expressed in different tissues.

PHB Antibody - Protocols

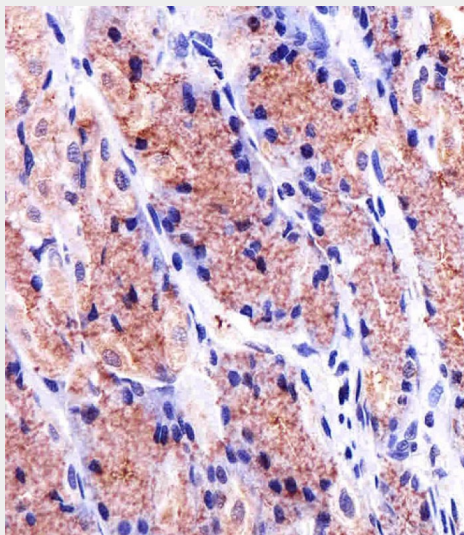
Provided below are standard protocols that you may find useful for product applications.

- [Western Blot](#)
- [Blocking Peptides](#)
- [Dot Blot](#)
- [Immunohistochemistry](#)
- [Immunofluorescence](#)
- [Immunoprecipitation](#)
- [Flow Cytometry](#)
- [Cell Culture](#)

PHB Antibody - Images



Western blot analysis of lysates from HepG2 cell line, rat liver tissue, MCF-7, mouse NIH/3T3 cell line (from left to right), using PHB Antibody (Cat. #AW5065). AW5065 was diluted at 1:1000 at each lane. A goat anti-mouse IgG H&L (HRP) at 1:10000 dilution was used as the secondary antibody. Lysates at 20ug per lane.



Immunohistochemical analysis of paraffin-embedded H. stomach section using PHB Antibody(Cat#AW5065). AW5065 was diluted at 1:25 dilution. A undiluted biotinylated goat polyvalent antibody was used as the secondary, followed by DAB staining.

PHB Antibody - Background

Prohibitin inhibits DNA synthesis. It has a role in regulating proliferation. As yet it is unclear if the protein or the mRNA exhibits this effect. May play a role in regulating mitochondrial respiration activity and in aging.

PHB Antibody - References

Sato T.,et al.Cancer Res. 52:1643-1646(1992).
Sato T.,et al.Genomics 17:762-764(1993).
Kalnine N.,et al.Submitted (MAY-2003) to the EMBL/GenBank/DDBJ databases.
Bienvenut W.V.,et al.Submitted (MAR-2005) to UniProtKB.
Lubec G.,et al.Submitted (DEC-2008) to UniProtKB.